



Phoneme Segmenting

PA. 042

Phoneme Closed Sort

Objective

The student will segment phonemes in words.

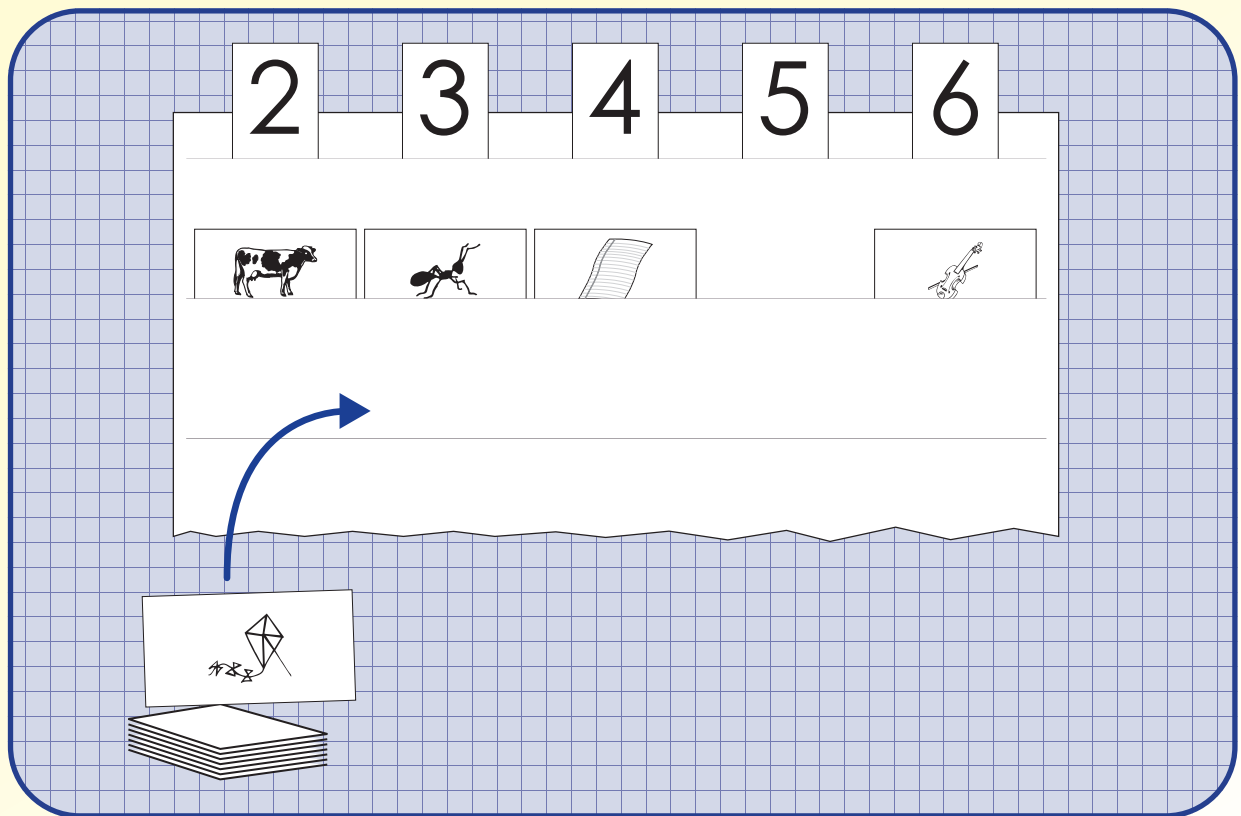
Materials

- ▶ Pocket chart
- ▶ *Arrange number header cards in a row at the top of the chart.*
- ▶ Number header cards
- ▶ Two-to-six phoneme picture cards

Activity

Students count phonemes in words and sort them on a pocket chart.

1. Place the phoneme picture cards face down in a stack next to the pocket chart.
2. Taking turns, students select a picture card and name the picture (e.g., “kite”).
3. “Finger tap” the number of phonemes while segmenting the word orally (i.e., “/k/ /ī/ /t/”).
Place the picture card under the corresponding number on the pocket chart (i.e., the picture card of “kite” is placed under the “3”).
4. Continue until all picture cards are sorted.
5. Peer evaluation



Extensions and Adaptations

- ▶ Clap syllables in other picture cards.

Phonological Awareness

PA. 042

Phoneme Closed Sort

2

header

3

header

4

header

5

header

6

header

header

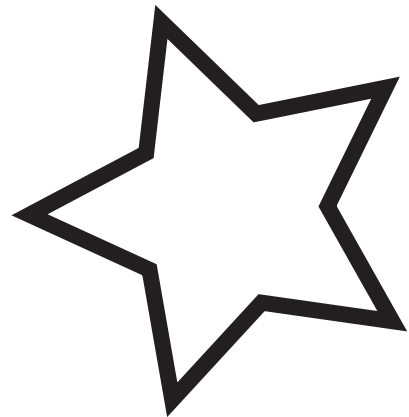
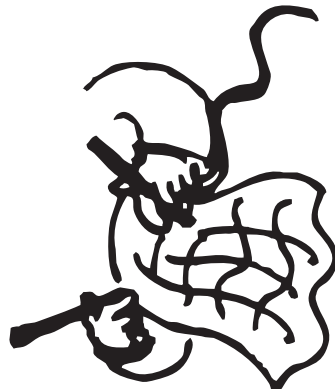
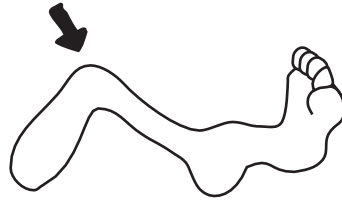
header cards



Phonological Awareness

Phoneme Closed Sort

PA. 042



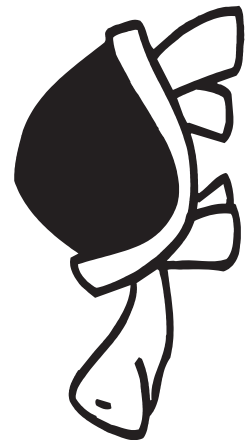
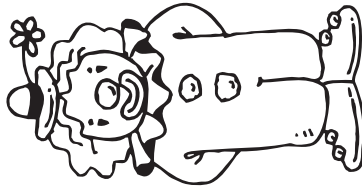
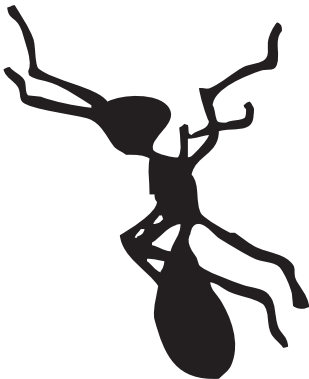
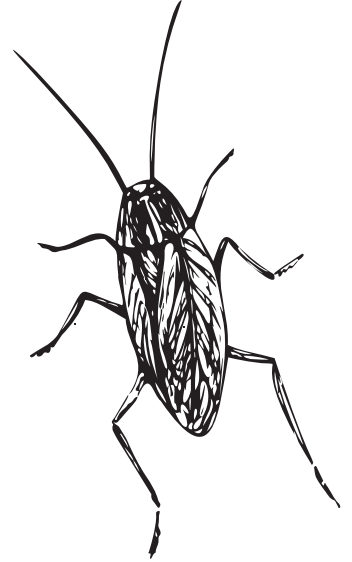
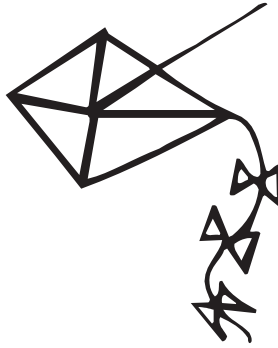
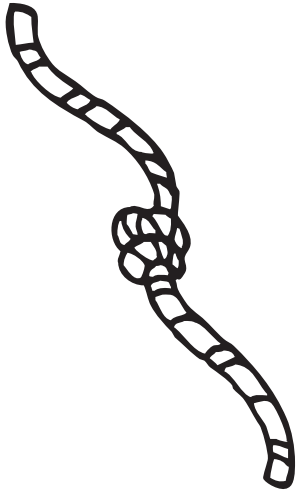
phoneme picture cards: cow-2, knee-2, pea-2, saw-2, sew-2, star-3



Phonological Awareness

PA. 042

Phoneme Closed Sort



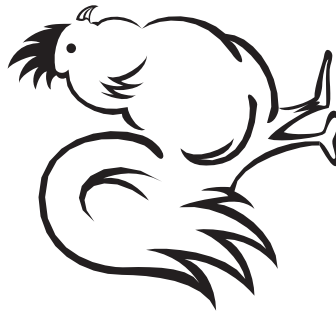
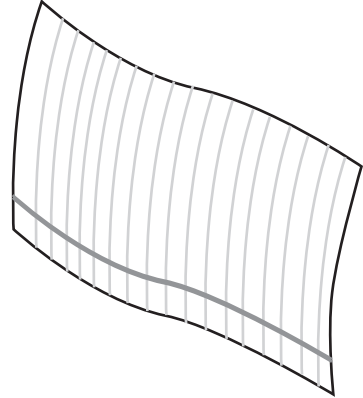
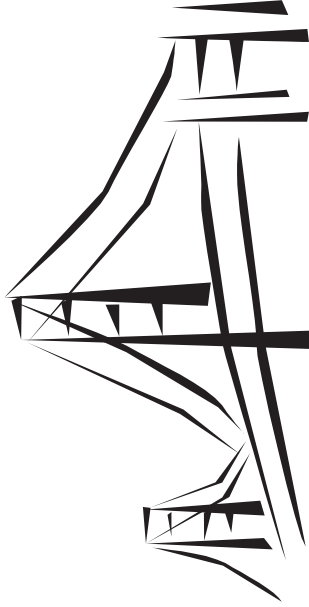
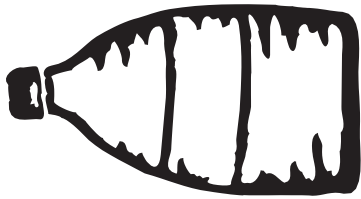
phoneme picture cards: rope-3, kite-3, roach-3 ant-3, clown-4, turtle-4



Phonological Awareness

Phoneme Closed Sort

PA. 042



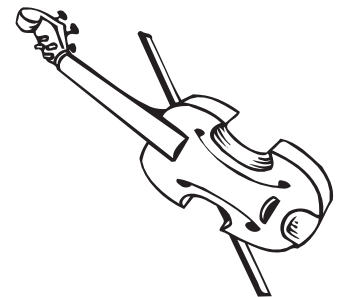
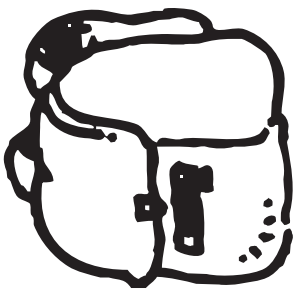
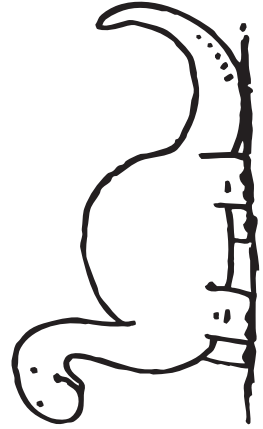
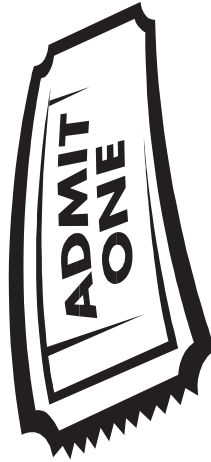
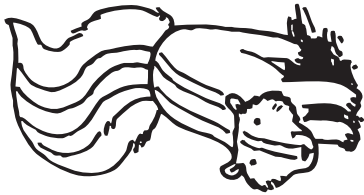
phoneme picture cards: bottle-4, bridge-4, paper-4, plant-5, rooster-5, lettuce-5



Phonological Awareness

PA. 042

Phoneme Closed Sort

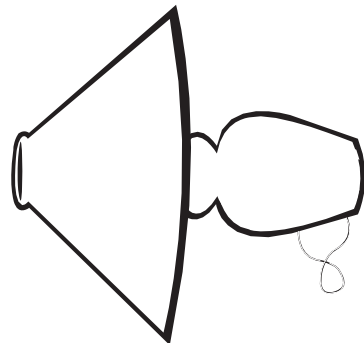
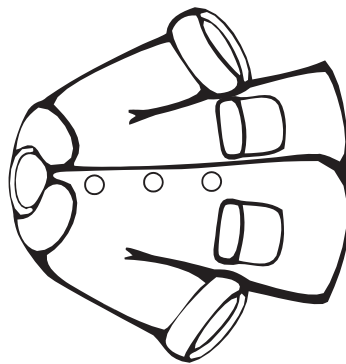
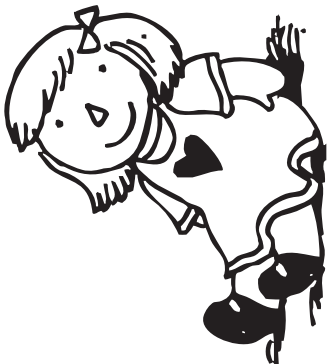
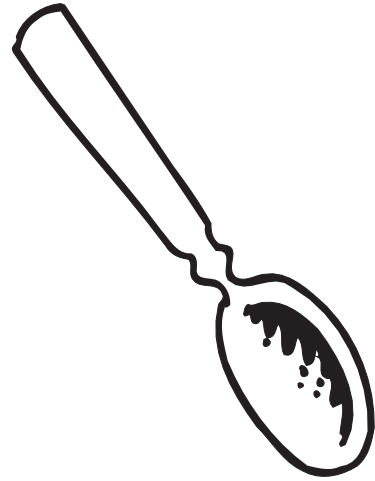
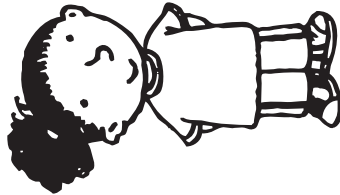
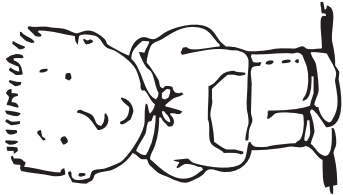


phoneme picture cards: skunk-5, ticket-5, dinosaur-6, backpack-6, snowman-6, violin-6

Phonological Awareness

Phoneme Closed Sort

PA. 042



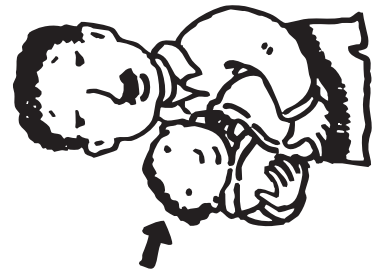
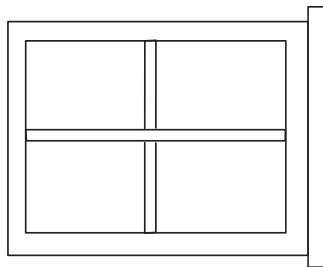
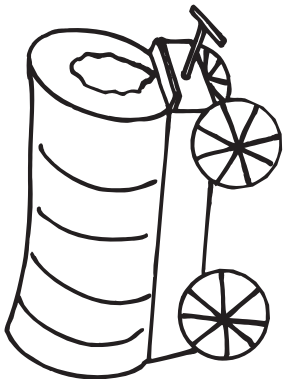
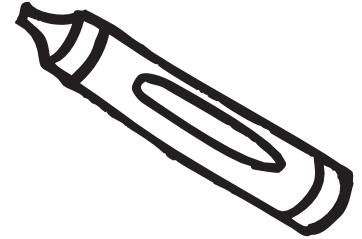
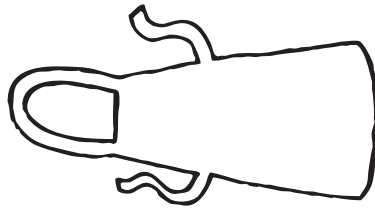
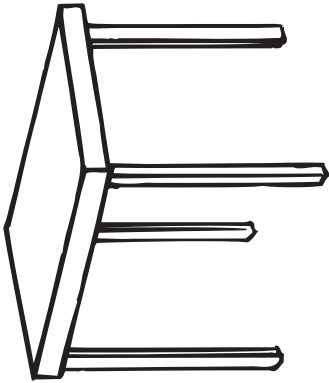
syllable picture cards: boy-1, girl-1, spoon-1, doll-1, coat-1, lamp-1



Phonological Awareness

PA. 042

Phoneme Closed Sort



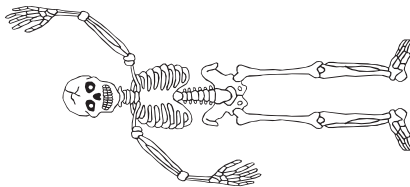
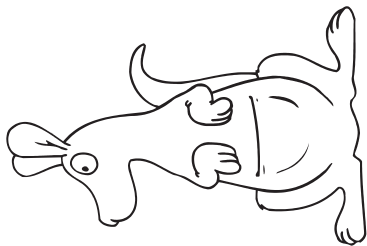
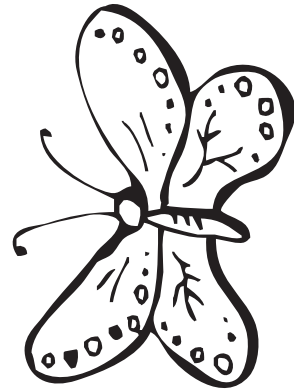
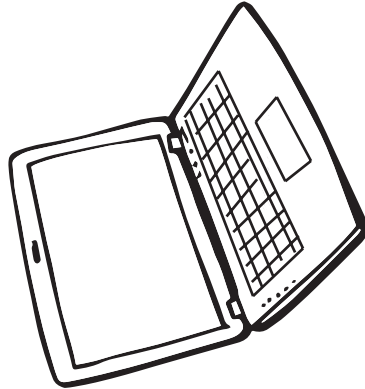
syllable picture cards: table-2, apron-2, crayon-2, wagon-2, window-2, baby-2



Phonological Awareness

Phoneme Closed Sort

PA. 042



syllable picture cards:

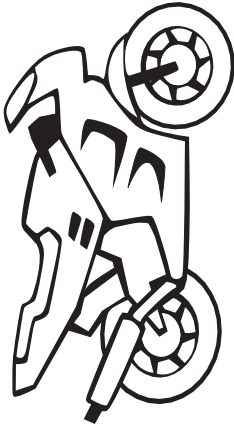

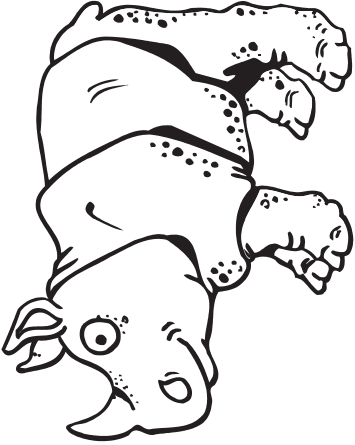
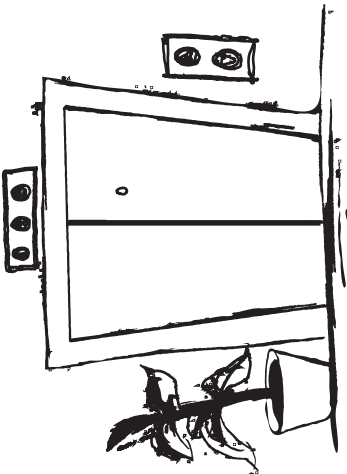

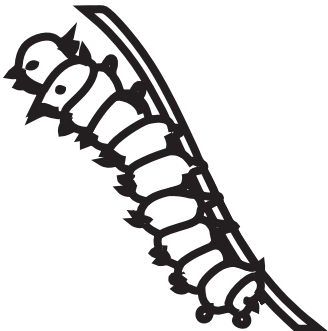
radio-3, computer-3, butterfly-3, kangaroo-3, skeleton-3, astronaut-3



Phonological Awareness

PA. 042

Phoneme Closed Sort

syllable picture cards:
motorcycle-4, alligator-4, rhinoceros-4, elevator-4, thermometer-4, caterpillar-4

