



 **Objective**

The student will blend onsets and rimes to make words.

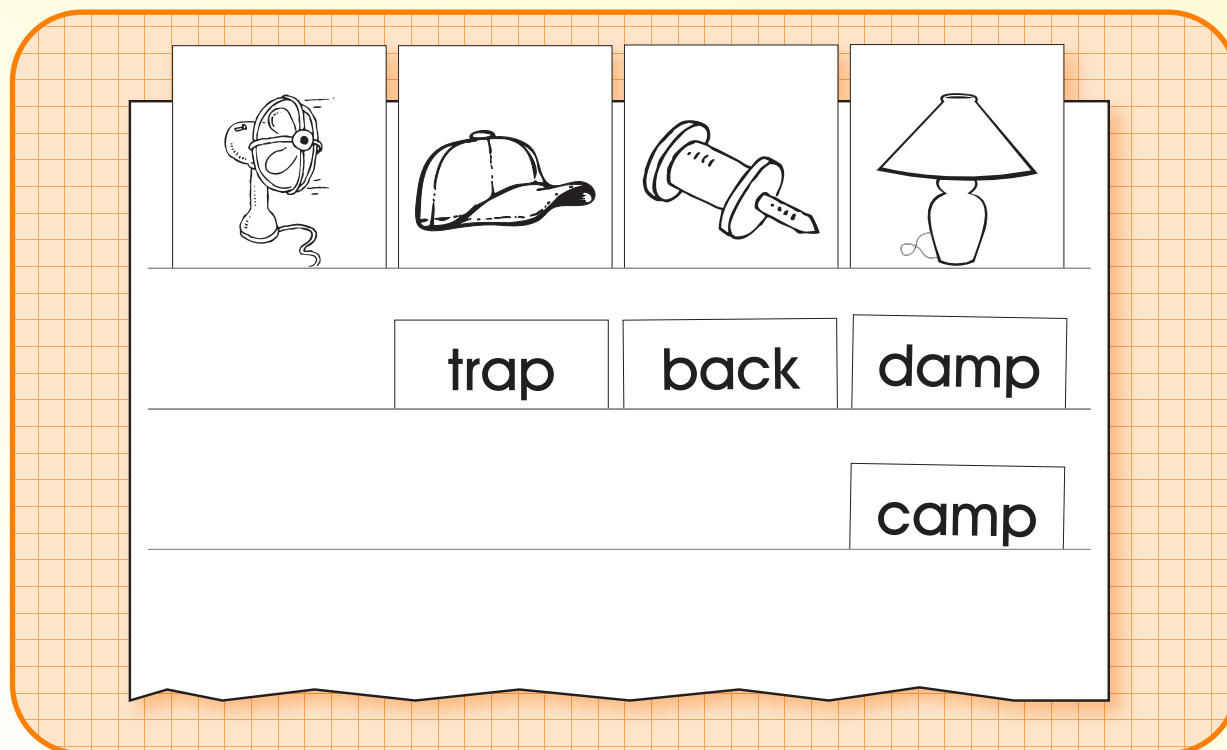
 **Materials**

- ▶ Rime picture header cards
- ▶ Rime word cards
- ▶ Pocket chart

 **Activity**

Students sort words by rimes on a pocket chart.

1. Place the picture header cards across the top row of the pocket chart. Place the word cards face down in a stack.
2. Working in pairs, students name each picture header card and segment the onset and rime (e.g., “lamp, /l//amp/”).
3. Select the top card from the stack, read the word, say its rime (e.g., “camp, -amp”), and look for the picture with the matching rime on the pocket chart (i.e., lamp).
4. Place the card in the corresponding column. Read all the words in that column (i.e., “ramp, damp, camp”).
5. Continue until all cards are sorted.
6. Peer evaluation



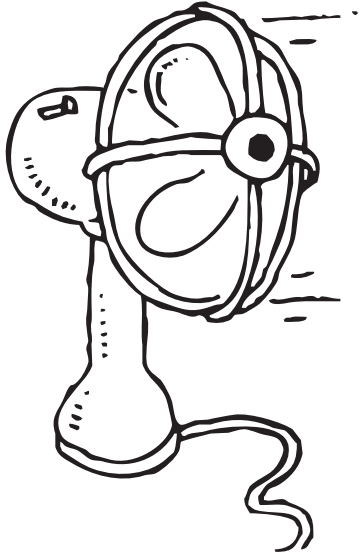
 **Extensions and Adaptations**

- ▶ Record on student sheet.
- ▶ Complete open sort with word cards.
- ▶ Use other picture cards as headers.

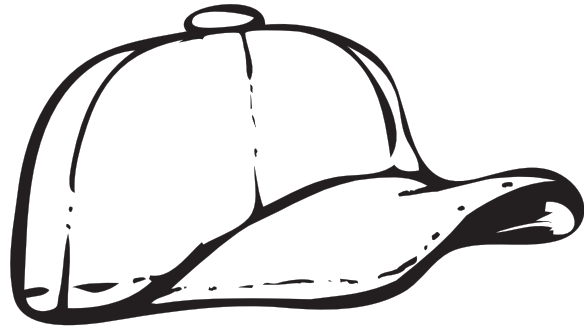
Phonics

Rime Closed Sort

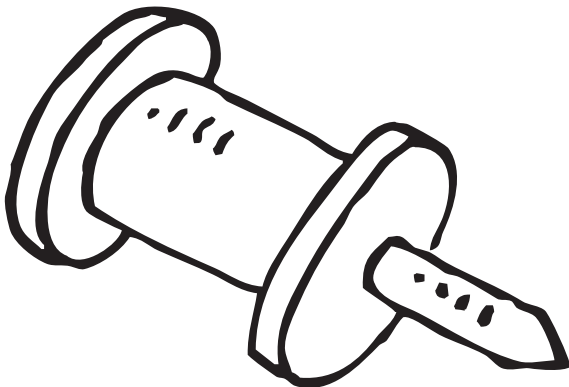
P. 029



header



header



header



header

rime picture header cards: fan, cap, tack, lamp



man

cap

tan

lap

can

sap

ran

nap

plan

trap



Phonics

Rime Closed Sort

P. 029

pack

camp

rack

ramp

sack

damp

back

champ

track

stamp

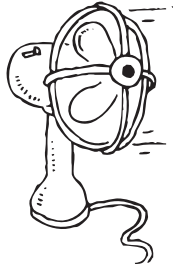
rime word cards



Name _____

P. 029

Rime Closed Sort



1. _____

2. _____

3. _____

4. _____

5. _____



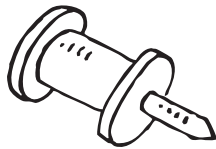
1. _____

2. _____

3. _____

4. _____

5. _____



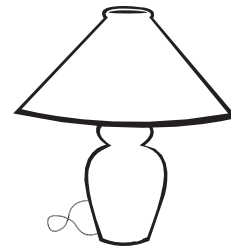
1. _____

2. _____

3. _____

4. _____

5. _____



1. _____

2. _____

3. _____

4. _____

5. _____